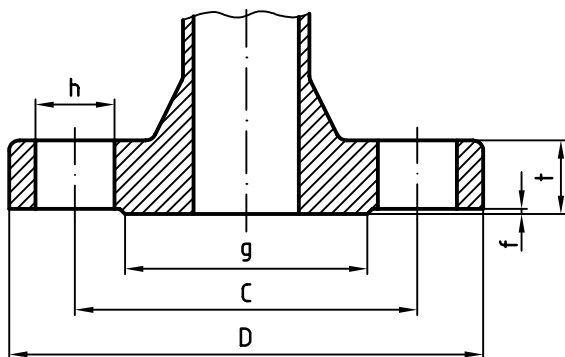
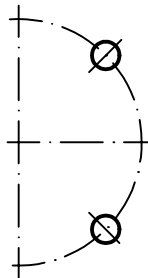


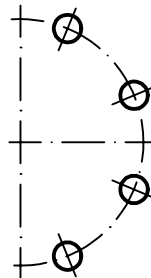
drilling pattern:



4 holes



8 holes



Nominal diameter			Standard	DIN	ANSI		JIS				
				PN	2501	150	300/600	5K	10K	16K	20K
DN15 (15mm)	Flange	D	Outer diameter	95	95 (88.9)	95	95 (80)	95			
		t	Thickness	16	16 (11.2)	16 (14.2)	16 (9)	16 (12)		16 (14)	
	Raised face	g	Diameter	45	45 (35)	45 (35)	45 (44)		45 (51)		
		f	Height	2	2 (1.5)		2 (1)				
	Bolt circle	C	Diameter	65	60.4	66.5	60		70		
			Number	4	4		4				
	Bolt holes	h	Diameter	14	(16)	16	(12)	15			
			Thread *)	-	1/2"UNC		-	M10		-	

DN20 (20mm)	Flange	D	Outer diameter	105	105 (98.5)	n/a	105 (85)		105 (100)		
		t	Thickness	18	18 (12.7)		18 (10)	18 (14)	18 (16)		
	Raised face	g	Diameter	58	58 (43)		58 (49)		58 (56)		
		f	Height	2	2 (1.5)		2 (1)				
	Bolt circle	C	Diameter	75	69.8		65	75			
			Number	4	4		4				
	Bolt holes	h	Diameter	15 (14)	(16)		(12)	15			
			Thread *)	-	1/2"UNC		M10	-			

DN25 (25mm)	Flange	D	Outer diameter	115	115 (108)	115 (124)	115 (95)	115 (125)			
		t	Thickness	18	18 (14.2)	18 (17.5)	18 (10)	18 (14)	18 (16)		
	Raised face	g	Diameter	68	68 (51)		68 (59)		68 (67)		
		f	Height	2	2 (1.5)		2 (1)				
	Bolt circle	C	Diameter	85	79.2	88.9	75	90			
			Number	4	4		4				
	Bolt holes	h	Diameter	14	(16)	(19)	(12)	19			
			Thread *)	-	1/2"UNC		5/8"UNC	M10	-		

DN40 (40mm)	Flange	D	Outer diameter	150	150 (127)	n/a	150 (120)		150 (140)		
		t	Thickness	20	20 (17.5)		20 (12)	20 (16)	20 (18)		
	Raised face	g	Diameter	88	88 (73)		88 (75)		88 (81)		
		f	Height	3	3 (1.5)		3 (2)				
	Bolt circle	C	Diameter	110	98.5		95	105			
			Number	4	4		4				
	Bolt holes	h	Diameter	19 (18)	(16)		(15)	19			
			Thread *)	-	9/16"UNC		M12	-			

DN50 (50mm)	Flange	D	Outer diameter	165	165 (152.4)	165	165 (130)	165 (155)		165	
		t	Thickness	22	22 (19.1)	22	22 (14)	22 (16)	22 (18)		
	Raised face	g	Diameter	102	102 (92)		102 (85)		102 (96)		102 (105)
		f	Height	3	3 (1.5)		3 (2)				
	Bolt circle	C	Diameter	125	120.6	127	105	120		130	
			Number	4	4	8	4	8			
	Bolt holes	h	Diameter	19 (18)	19		(15)	19			
			Thread *)	-	-		M12	-			

( ) required by standard,  
x) if only possible with threads

all dimensions in mm

IV	III	II	I	Aend.	a	-	-	e	-	-	gezeichnet	08.02.07	NNI	Masstab -
					b	-	-	f	-	-	geprüft	08.02.07	JHE	
					c	-	-	g	-	-	freigegeben	08.02.07	MGS	
					d	-	-	h	-	-	CAD: AutoCad LT2000	Datei: -		
VI 14-901e					Typ: CONTOIL®			Material: EN-GJS-400-15			Klass.Nr.: -			
Aquametro AG 4106 Therwil					Dimensions of flanges					Blatt-Nr. 1		Anz.-Blatt 1		
										AM.020242.4				
					VI 14-901 e01- 02.2007									

The copyrights of this drawing and all attachments which have been entrusted to the recipient remain the exclusive property of Aquametro at all times. Without Aquametro's prior written consent, they may neither be copied nor duplicated and may never be communicated or made accessible to third parties.